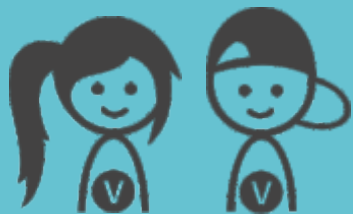




# EBEN-EZER

Community residential facility  
and social therapeutic workshop



## Term project

1st September 2019  
– 31st August 2020

## Address

Vělopolská 243  
737 01 Horní Žukov



## Target group

People with mental  
and combined disabilities

## Activities

Your task will be to work with users in the workshops and support or assist them during work in therapeutic workshops. You can work with different materials - ceramics, paper, cloth or wood. This will help you learn the different work techniques with the material. Sometimes there will be the opportunity to teach users to work on a PC or to organize work in social therapeutic workshops. You will accompany users during afternoon activities and leisure time activities, including sport and cultural activities and events, trips, and travels, participate in preparing various meetings, events, and celebrations. You will participate in teaching the users (memory games) and supporting them during the practice of new skills (work, daily activities, etc.) You will participate in activities of both, service provided by Eben-Ezer social therapeutic workshops and community residential facility. There will be an opportunity to plan, prepare and realize activities and do your own mini-project.



## Challenges

The main challenge is communication with people with mental disabilities and that most workers do not know a foreign language. Be prepared for the first few weeks you will have to communicate with your foot and hands. Mainly you will work with one or small group of users individually.



## Your profile

It is a good point for you if you are creative nature. Practical experiences with people with disabilities will be helpful. We would like a person with ideas what they want to do and which they could offer in a group of mentally disabled people.

