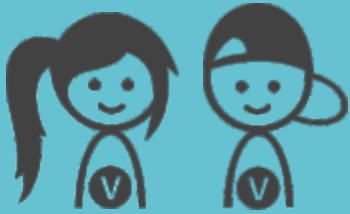




EFFATHA

Socio-therapeutic workshop



Term project

1st September 2019
– 31st August 2020

Address

U Jičínky 25, 741 01 Nový Jičín
Pod Lipami 19, 741 01 Nový Jičín



Target group

People with mental and multiple disabilities, people with autism spectrum disorders aged between 15 and 80 years.

Activities

The mission of EFFATHA workshops is to support adults with disabilities. The goal is acquiring and strengthening their work and social skills and habits, as well as their self-sufficiency and independence. Your main task will be to provide individual and personal support to people using EFFATHA'S services. You will support and assist them during various therapeutic workshops like: pottery, textile workshop, basketry workshop, woodworking and others. You will also accompany and assist service users during various activities and events like: cooking, gardening, trips, memory training, relaxation activities, and others. You will also participate in regular discussions and presentation for EFFATHA users on various topics (such as health, relationships, rights of citizens and others).



Challenges

EFFATHA puts great emphasis on the independence of a volunteer and on their active involvement in work with individual clients as well as on realisation of their own ideas and projects. During your service in our centre you can use your skills and talents. You will have space to plan, realize and introduce us your mini project - for example it can be about your country and traditions, etc.



Your profile

As we motivate our clients to be responsible and to fulfil their duties, we expect the same from our volunteers. This means you need to be also careful and open to learn new things and the Czech language. Furthermore, for the work with our target group it is very important to be empathic to understand needs of users.

