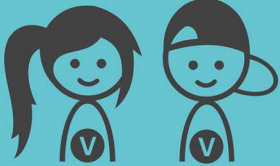


Schools in Krnov

Special Kindergarten and Elementary school, Practical Elementary school, Practical Secondary school



Term project

1st September 2019
– 30th June 2020

Address

Hlubčická 9, 794 01 Krnov
(Practical Secondary school)
Hlubčická 11, 794 01 Krnov
(Elementary school)



Target group

Pupils with more serious forms of mental and combined disabilities, and different kinds of autism + pupils with special education needs and learning difficulties or mild forms of mental disabilities.



Activities

The activities of your service will be divided between two schools – Special Kindergarten + Elementary School and Practical Secondary School. At the beginning of the service, you will participate only in these two buildings. After your Czech language skills get better, you will be involved in the activities at the Practical Elementary School as well – working with the pupils in the lessons or attending the afternoon club and helping there. All your activities will be done in cooperation with teachers or assistant teachers. Your main task will be to accompany children in various activities. You will assist those with severe disabilities during meals (serving, feeding, cleaning) or helping them to participate in lessons (drawing, counting, working with various educational tools). Some of the children started with therapies which may be interesting for you too (art therapy, music therapy, rehabilitation and others).



Challenges

In our schools we have a difficult target group - children with mental disability and combined disabilities. Moreover to work with our users you need to be prepared for a language barrier – it is useful to improve your Czech language skills, however we have also children which do not verbally communicate. During your service in our schools you will also have an opportunity to realize your own activities and make your own mini project.



Your profile

You need to have a good relationship with our target group – children of any age. Therefore, you should be empathic, tolerant, warm-hearted, patient and proactive. It is also important to have desire to help and be open to learn new skills.

