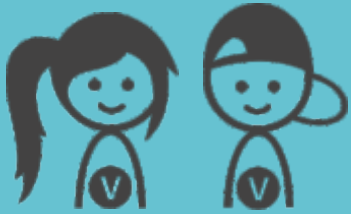




# SAREPTA

House for seniors



### Term project

1st September 2019  
– 31st August 2020

### Address

Komorní Lhotka 210  
739 53 Hnojník



### Target group

Elderly people

### Activities

Among your most typical tasks will be the support of seniors in their frequently complicated life situations. In practise, it is your presence and time investment that is most valuable. By quality time is meant listening, reading, viewing old photo albums, playing cards and other board games, engaged in talks about subjects that have a beneficial influence on the well-being of the senior. You should bear in mind that frequently the senior does not have a supportive family, so this interaction and concern are extremely important. Reading aloud and singing accompanied by playing the instrument, are invaluable services. The seniors also like walking in the garden and in the surroundings of Komorní Lhotka. Accompanying the senior in the open air will therefore be a frequent activity. You will also cooperate with workers in social services.



### Challenges

SAREPTA personnel encourage the users to maintain their already accustomed way of life, taking into account safety measures and capacities. As the users are elderly people, you will fully practise your empathy and help them to continue with a dignified and contented life. You will also quickly improve Czech language as communication is an important part of the work with seniors.



### Your profile

We expect from you that you will be proactive, responsible, tolerant and will have a good relationship with our target group – seniors. This means you need to be also patient, careful and open to learn new things and the Czech language. Furthermore for the work with our users it is very important to be empathic to understand their needs.

